

AUTHORITY TO DRIVE AIRSIDE (ADA) THEORY TEST

Instructions

Please select which ADA category you are applying for:

CAT 2 Questions 1-20. A pass is 18/20

CAT 3 Questions 1-30. A pass is 28/30

Circle the letter that corresponds to the answer that you think is correct.

Questions 1 - 10 MUST be answered correctly.

Name		Date	
Company			
Result	Pass / Fail	Marked By	

1. **When an aircraft has its beacons flashing or propellers are in motion you must**
 - a. Stay clear as the engines are running or about to be started
 - b. Approach the aircraft from the front
 - c. Ignore the beacons
 - d. None of the above

2. **A vehicle approved to operate on the airside must have**
 - a. An Authority to Use Airside (AUA) permit, affixed to the vehicle
 - b. A rotating or flashing beacon, visible 360 degrees around the vehicle.
 - c. Logo which identifies the Operator of the vehicle (if a company)
 - d. All of the above

3. **The speed limit within 15 metres of an aircraft is**
 - a. 25 km/h
 - b. 20 km/h
 - c. 10 km/h
 - d. 5 km/h

4. **In what areas are the holders of a Category 2 ADA only authorised to drive an unescorted approved vehicle**
 - a. On all movement areas
 - b. On the manoeuvring area
 - c. On all aprons and perimeter roads
 - d. All of the above

- 5. What colour are Unserviceability markers**
- a. Blue
 - b. Orange
 - c. Red and white
 - d. Yellow
- 6. If an aircraft is moving on an apron or taxiway you must**
- a. Give way to moving aircraft
 - b. Give way only if the pilot hasn't seen you
 - c. Give way only if the aircraft is on your left
 - d. Give way only if the aircraft is on your right
- 7. What is the speed limit on aprons and taxiways**
- a. 60 km/h
 - b. 35 km/h
 - c. 15 km/h
 - d. 25 km/h
- 8. You must not drive within ___ metres of an aircraft except when required for servicing of the aircraft**
- a. 3 metres
 - b. 5 metres
 - c. 10 metres
 - d. 15 metres
- 9. The speed limit on perimeter roads is**
- a. 20 km/h
 - b. 30 km/h
 - c. 40 km/h
 - d. 60 km/h
- 10. Taxiway centre lines are marked by**
- a. Broken yellow line extending from the taxiway
 - b. Solid yellow line extending along the taxiway
 - c. Broken red line
 - d. Green lights

- 11. Taxiway edges are marked by**
- Broken yellow lines
 - Solid white lines
 - Solid double yellow lines or yellow cones
 - All of the above
- 12. If your State or Territory Licence is cancelled at any time whilst you hold an ADA you must**
- Stop driving immediately and surrender your ADA within 48 hours
 - Notify your vehicle operator only
 - Notify the Airport Reporting Officer
 - Do nothing; it does not affect the Authority to Drive airside
- 13. Under declared low visibility conditions**
- Blanket clearances will be cancelled
 - ATC will restrict access to the manoeuvring areas
 - Only a single aircraft or vehicle will have manoeuvring area at one time.
 - All of the above
- 14. If your vehicle becomes immobilised on an apron, other than in a designated parking area, you must**
- Notify BAL\CAL immediately and organise to have it moved
 - Push the vehicle off to the side and leave it
 - Lock the vehicle and get help to move it
 - Do nothing and hope no one notices
- 15. An Authority to Use Airside must be displayed**
- On the passenger side of the windscreen
 - In a holder facing outward on the front of a vehicle with no windscreen
 - On the right hand side of the windscreen
 - Either a, b, c.
- 16. Helicopter apron edges are marked with**
- Red and White cones
 - Yellow cones
 - Blue cones
 - White gable markings
- 17. Parking limit lines are marked by**
- Broken white lines
 - Continuous yellow lines either side of a continuous red line
 - Broken yellow lines
 - Broken red lines
- 18. When driving airside you must**

- a. Not use or answer a hand held mobile phone or text whilst driving
- b. Obey all regulatory signs and adhere to speed limits
- c. The vehicle you are using must hold an Authority to Use Airside (AUA) permit
- d. All of the above

19. If driving Airside at night you must have

- a. Headlights dipped and tail lights operating
- b. A 360° rotating beacon operating
- c. High beam on so you are seen
- d. Both A & b

To obtain a Category 3 ADA please continue to answer the following questions and complete the diagram attached.

20. What is the name of the taxiways that can only be driven on whilst you have an aircraft on tow?

- a. TWY 'E' (between TWY 'F' AND TWY 'J')
- b. TWY 'W'
- c. TWY 'B'
- d. Answers A and C.

21. Runway holding points are identified at night by

- a. Green lights on the edges
- b. Blue lights on the edges
- c. Yellow lights across the taxiway
- d. Red lights on the edges

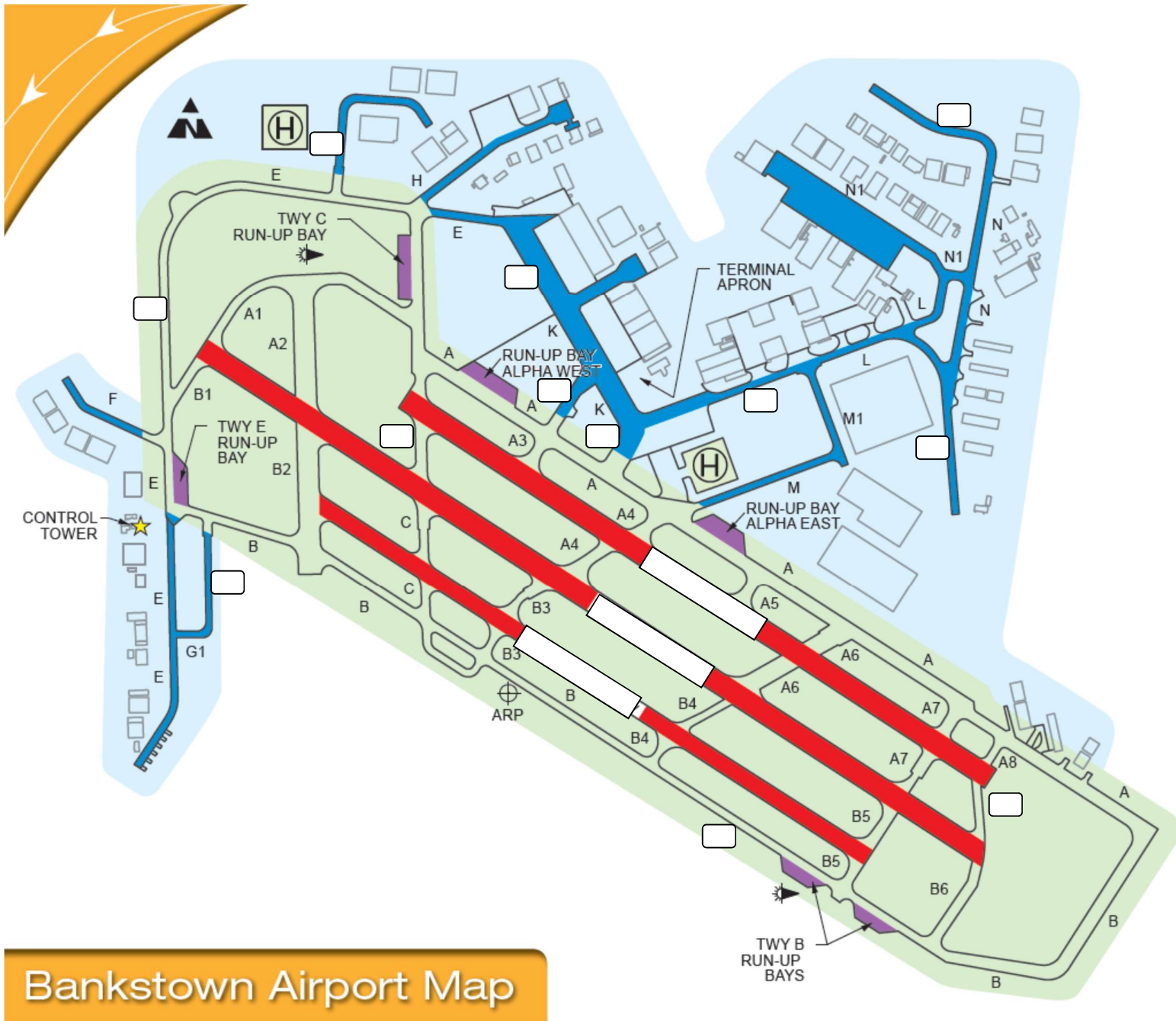
22. What is referred to as the 'Manoeuvring Area?'

- a. The Aprons
- b. The Taxiways
- c. The Runways
- d. That part of the airport used for take-off, landing and taxiing of Aircraft excluding aprons

23. You may not drive on the manoeuvring area unless:

- a. Your vehicle is equipped with a radio capable of 2 way communication with ATC and you have received permission from the Tower to enter the manoeuvring area
- b. You hold an Aeronautical Radio Operators Certificate You are under the Supervision of a vehicle which meets both a. and b.
- c. Both a. and b. OR c.

- 24. If directed by ATC to “Hold short” you should**
- Continue with caution
 - Stop, check for planes then continue
 - Stop short of the taxiway and acknowledge message from the tower. Then await permission from the Tower to continue
 - None of the above
- 25. You are driving on a taxiway when you notice ATC displaying a red flashing light. This indicates**
- Permission to enter taxiway
 - Move off the taxiway immediately and watch for Aircraft
 - Stop immediately
 - Permission to cross runway or to move on a taxiway
- 26. Immediately after ATC has displayed red flashing lights, you notice the flashes are now green**
- You now have permission to move on the taxiway
 - You must vacate the taxiway immediately
 - Stop immediately
 - Move to the manoeuvring area
- 27. Before proceeding onto the manoeuvring area you must**
- Turn your vehicles stereo off.
 - Have a flashing beacon operating
 - Establish radio contact with the Tower
 - All of the above
- 28. When driving within the manoeuvring areas you must**
- Hold a current Cat 3 ADA
 - Drive a vehicle equipped with a two way radio for communication with ATC.
 - Have high beam on so you are seen
 - Both A & B
- 29. Please complete the attached diagram showing all RWY and TWY designations**
- Diagram is to be 100% correct



Bankstown Airport Map

LEGENDS

- Control Tower
- Helipad
- Windsock
- Airport Reference Point (ARP)

Movement Area Guidance Signs (MAGS)

C A1 →

Runway Holding Point Signs

C 11L-29R

Radio Frequencies

- Surface Movement Controller (SMC) – 119.9
- Air Traffic Control (ATC) – 132.8
- ATC Circuit Frequency – 123.6
- ATIS – 120.9

KEYS

- Apron
- Manoeuvring Area
- Runways
- Run Up Bays